

## Injury attendances to Royal Bolton Hospital Emergency Department

### October 2010 to September 2011

This report summarises recorded injury attendances to Royal Bolton Emergency Department (ED) between October 2010 and September 2011.

Between October 2010 and September 2011 there were 43,674 injury attendances to Royal Bolton ED. Males accounted for over half (53%) of these attendances. The month with the highest attendances was October (n=4,542) with March having the lowest (n=2,775) (**Figure 1**). Of the specified injury groups falls (10%) accounted for the highest proportion followed by road traffic collision (RTC) (4%) and assault (4%) (**Table 1**).

The highest proportion of attendances was for persons aged 20-34 (24%) and 5-19 (20%) years (**Figure 2**). Over four in ten (42%) of fall attendees were aged 65 or over while nearly three in ten (29%) of burns and scalds injuries were sustained by 0 to 4 year olds. Nearly four in ten (38%) of RTC attendees were aged 20-34 (**Figure 3**).

**Table 2** shows the ethnicity of attendees to Royal Bolton ED. Seven in ten (70%) were white whilst over a fifth (22%) were recorded as not known.

The disposal of a patient can give an indication of the severity of the injuries sustained. Over four in ten (41%) of attendees were referred, over a third (35%) were discharged and 16% were admitted (**Table 3**). Nearly six in ten (56%) of burns and scalds attendees

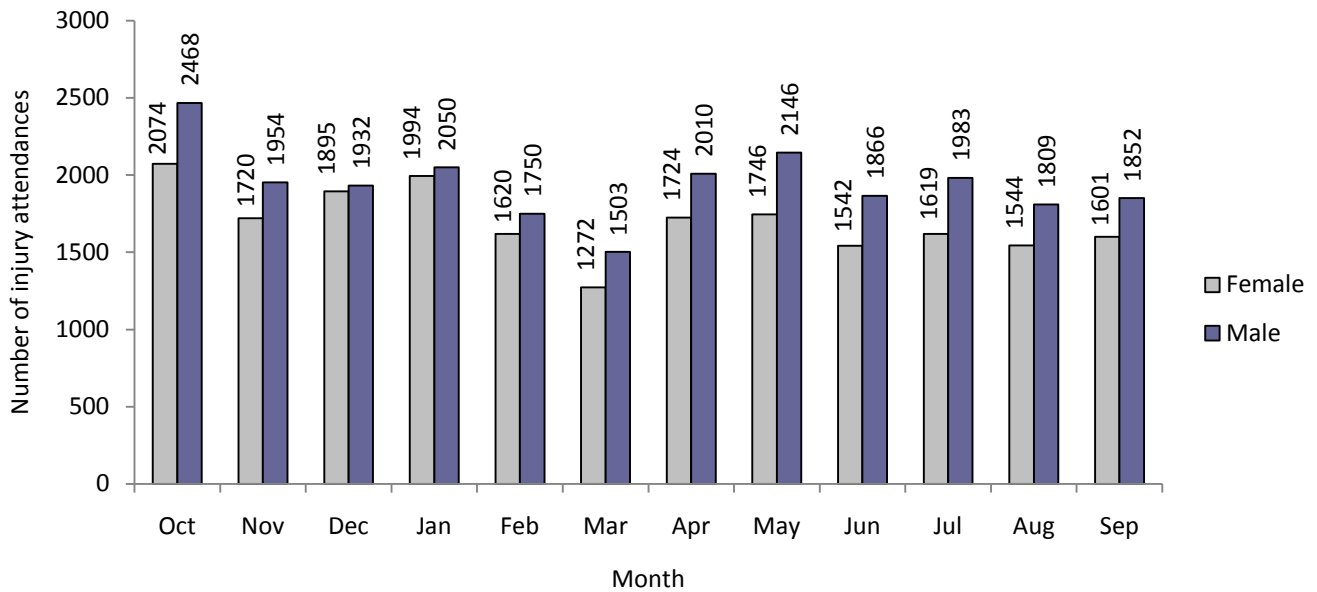
were referred, while a quarter (25%) of deliberate self-harm (DSH) attendees were admitted. Over two-fifths (41%) of assault attendees were discharged. Nearly one in five (19%) of fall attendees were admitted (**Table 4**).

**Table 5** shows the arrival methods of attendances at Royal Bolton ED. Nearly three-quarters (74%) of attendees arrived by foot, whilst a quarter (25%) arrived by ambulance.

**Table 6** shows the location of the incident of the main injury groups (excluding other injury). Over seven in ten (71%) of all injuries occurred in the home.

**Table 7** presents data for assault attendees to Royal Bolton ED. Males represent nearly three-quarters (72%) of assault attendances, whilst over four in ten (44%) of assault attendees were aged 20 to 34. Over a third (36%) of assault attendances occurred on weekend nights and over half (51%) arrived by ambulance.

**Figure 1: Royal Bolton ED: Total injury attendances by gender and month, October 2010 to September 2011**

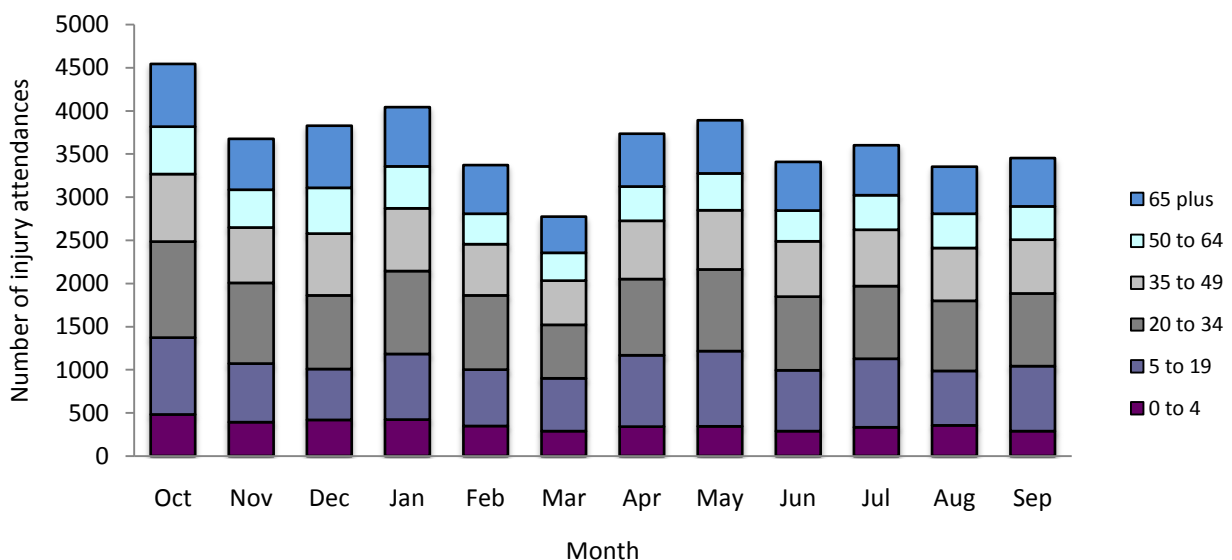


**Table 1: Royal Bolton ED: Total injury attendances by injury group and month, October 2010 to September 2011<sup>1\*</sup>**

Injury group	Oct	Nov	Dec	Jan	Feb	Mar	Apr	May	Jun	Jul	Aug	Sep	Total	%
Other injury	3676	2809	2847	3061	2516	2150	2668	2910	2516	2571	2393	2493	32610	75
Fall	329	347	506	436	361	287	366	329	271	348	335	334	4249	10
RTC	168	179	116	172	123	67	125	157	161	132	167	132	1699	4
Assault	137	133	126	131	136	85	175	120	110	152	123	125	1553	4
Sports injury	84	62	93	96	108	89	206	199	144	163	101	170	1515	3
Bites and stings	63	43	43	44	34	33	69	60	98	117	112	86	802	2
Burns and scalds	54	73	58	68	51	38	87	73	74	64	73	73	786	2
DSH	31	28	38	36	41	26	38	44	34	55	49	40	460	1
<b>Total</b>	<b>4542</b>	<b>3674</b>	<b>3827</b>	<b>4044</b>	<b>3370</b>	<b>2775</b>	<b>3734</b>	<b>3892</b>	<b>3408</b>	<b>3602</b>	<b>3353</b>	<b>3453</b>	<b>43674</b>	<b>100</b>

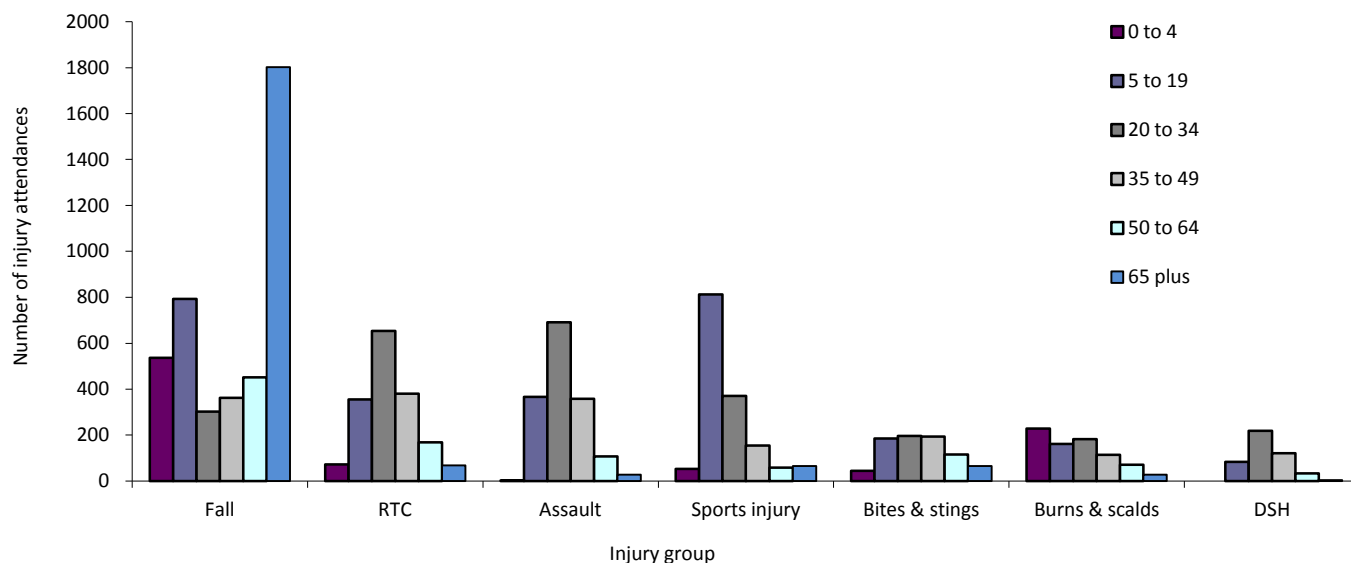
\*Percentages may not add up to 100 due to rounding

**Figure 2: Royal Bolton ED: Total injury attendances by age group and month, October 2010 to September 2011**



<sup>1</sup> Firework injury has been included in other injury due to low numbers (n<5)

**Figure 3: Royal Bolton ED: Total injury attendances by age group and injury group (excluding other injury), October 2010 to September 2011**



**Table 2: Royal Bolton ED: Total injury attendances by ethnicity and month, October 2010 to September 2011<sup>2\*</sup>**

Ethnicity	Oct	Nov	Dec	Jan	Feb	Mar	Apr	May	Jun	Jul	Aug	Sep	Total	%
White	3142	2550	2638	2867	2402	1899	2570	2772	2364	2498	2318	2416	30436	70
Not known	1007	820	894	846	708	653	860	816	770	809	778	770	9731	22
Indian	146	110	111	117	95	67	88	87	99	108	76	99	1203	3
Pakistani	109	104	87	102	85	74	91	103	96	93	89	91	1124	3
Black	33	27	30	32	29	17	37	29	30	30	24	16	334	1
Mixed	42	22	27	36	19	23	37	31	14	20	25	24	320	1
Any other ethnic group	30	22	20	24	15	21	19	25	17	16	26	16	251	1
Other Asian background	24	14	15	16	13	18	22	21	17	18	11	19	208	0
Chinese	***	***	***	***	***	***	***	***	***	***	***	***	37	0
Bangladeshi	***	***	***	***	***	***	***	***	***	***	***	***	30	0
<b>Total</b>	<b>4542</b>	<b>3674</b>	<b>3827</b>	<b>4044</b>	<b>3370</b>	<b>2775</b>	<b>3734</b>	<b>3892</b>	<b>3408</b>	<b>3602</b>	<b>3353</b>	<b>3453</b>	<b>43674</b>	<b>100</b>

\*Percentages may not add up to 100 due to rounding

**Table 3: Royal Bolton ED: Total injury attendances by method of disposal and month, October 2010 to September 2011**

Disposal	Oct	Nov	Dec	Jan	Feb	Mar	Apr	May	Jun	Jul	Aug	Sep	Total	%
Referral/follow-up	2053	1632	1578	1871	1311	1120	1478	1557	1288	1389	1280	1353	17910	41
Discharged	1345	1162	1204	1172	1121	947	1384	1471	1339	1445	1408	1371	15369	35
Admitted	774	554	651	698	615	474	533	577	514	506	410	501	6807	16
Other	370	326	394	303	323	234	339	287	267	262	255	228	3588	8
<b>Total</b>	<b>4542</b>	<b>3674</b>	<b>3827</b>	<b>4044</b>	<b>3370</b>	<b>2775</b>	<b>3734</b>	<b>3892</b>	<b>3408</b>	<b>3602</b>	<b>3353</b>	<b>3453</b>	<b>43674</b>	<b>100</b>

**Table 4: Royal Bolton ED: Total injury attendances by method of disposal and injury group (excluding other injury), October 2010 to September 2011**

Disposal	Assault		Bites & stings		Burns & scalds		DSH		Fall		RTC		Sports injury		Total	
	n	%	n	%	n	%	n	%	n	%	n	%	n	%	n	%
Discharged	639	41	364	45	257	33	95	21	1486	35	818	48	682	45	4341	39
Referral/follow-up	573	37	339	42	439	56	149	32	1454	34	716	42	657	43	4327	39
Admitted	83	5	26	3	11	1	115	25	811	19	79	5	109	7	1234	11
Other	258	17	73	9	79	10	101	22	498	12	86	5	67	4	1162	11
<b>Total</b>	<b>1553</b>	<b>100</b>	<b>802</b>	<b>100</b>	<b>786</b>	<b>100</b>	<b>460</b>	<b>100</b>	<b>4249</b>	<b>100</b>	<b>1699</b>	<b>100</b>	<b>1515</b>	<b>100</b>	<b>11064</b>	<b>100</b>

<sup>2</sup> Please note that all numbers less than five have been suppressed in line with patient confidentiality and if there is only one number <5 in a category then two numbers will be suppressed at the next level.

**Table 5: Royal Bolton ED: Total injury attendances by mode of arrival and month, October 2010 to September 2011\***

Arrival mode	Oct	Nov	Dec	Jan	Feb	Mar	Apr	May	Jun	Jul	Aug	Sep	Total	%
Foot	3363	2697	2700	2977	2399	2084	2822	2956	2537	2761	2564	2587	32447	74
Ambulance	1170	968	1111	1056	963	686	908	932	865	833	783	860	11135	25
Other	9	9	16	11	8	5	***	***	6	8	6	6	92	0
<b>Total</b>	<b>4542</b>	<b>3674</b>	<b>3827</b>	<b>4044</b>	<b>3370</b>	<b>2775</b>	<b>3734</b>	<b>3892</b>	<b>3408</b>	<b>3602</b>	<b>3353</b>	<b>3453</b>	<b>43674</b>	<b>100</b>

\*Arrival by helicopter has been included in other due to low numbers (n=37); percentages may not add up to 100 due to rounding.

**Table 6: Royal Bolton ED: Total injury attendances by location, injury group (excluding other injury) and month, October 2010 to September 2011\***

Location	Assault		Bites and stings		Burns and scalds		DSH		Fall		RTC		Sports injury		Total	
	n	%	n	%	n	%	n	%	n	%	n	%	n	%	n	%
Home	792	51	514	64	646	82	362	79	3031	71	451	27	609	40	6405	71
Other	380	24	192	24	90	11	74	16	716	17	558	33	455	30	2465	16
Public place	308	20	60	7	6	1	20	4	140	3	666	39	264	17	1464	7
Educational establishment	23	1	***	0	***	0	***	0	274	6	5	0	174	11	483	3
Work	26	2	22	3	34	4	***	0	34	1	6	0	***	0	125	2
Not specified	24	2	***	1	***	1	***	1	54	1	13	1	***	1	122	2
<b>Total</b>	<b>1553</b>	<b>100</b>	<b>802</b>	<b>100</b>	<b>786</b>	<b>100</b>	<b>460</b>	<b>100</b>	<b>4249</b>	<b>100</b>	<b>1699</b>	<b>100</b>	<b>1515</b>	<b>100</b>	<b>11064</b>	<b>100</b>

\*Percentages may not add up to 100 due to rounding.

**Table 7: Royal Bolton ED: Total assault attendances by gender, arrival mode, location of incident, age group and day/time of attendance, October 2010 to September 2011\***

	Assault attendees		All injury attendees (n=43,674)
	n	%	%
<b>Gender</b>			
Male	1122	72	53
Female	431	28	47
<b>Arrival mode</b>			
Ambulance	753	51	25
Foot	796	49	74
Other	4	0	0
<b>Location</b>			%**
Not specified	24	2	2
Home	792	51	71
Public place	308	20	7
Other	380	24	16
Work	26	2	2
Educational establishment	23	1	3
<b>Age group</b>			
0 - 4	***	0	10
5 - 19	366	24	20
20 - 34	691	44	24
35 - 49	358	23	18
50 - 64	107	7	12
65 plus	***	2	16
<b>Day and time of attendance</b>			
Weekends***	557	36	12
Weekend day	298	19	23
Weekdays	698	45	65

\*Percentages may not add up to 100 due to rounding.

\*\*Excluding other injury (n=11,064).

\*\*\*9pm to 4am, Friday night/Saturday morning; Saturday night/Sunday morning; Sunday night/Monday morning.

Author: Ian Warren, Published: December 2011

For further information please contact: Centre for Public Health, Research Directorate, Liverpool John Moores University, 2<sup>nd</sup> Floor, Henry Cotton Building, 15-21 Webster Street, Liverpool, L3 2ET, Tel: 0151 231 4513 or Email: [i.j.warren@ljmu.ac.uk](mailto:i.j.warren@ljmu.ac.uk)

Website: [www.tiig.info](http://www.tiig.info) (data requests should be made through the website)